

For Mamiya and Bronica medium format cameras and accessories go to : [www.ianbfoto.com](http://www.ianbfoto.com)

# Mamiya

## New Mamiya 6

[www.ianbfoto.com](http://www.ianbfoto.com)



[www.ianbfoto.com](http://www.ianbfoto.com)



**THE ULTIMATE 6×6cm RANGEFINDER CAMERA  
WITH GREAT VERSATILITY, MOBILITY AND SMOOTH, SILENT OPERATION**

# New Mamiya 6



**MAMIYA, THE LEADER IN MEDIUM FORMAT PHOTOGRAPHY  
INTRODUCES**

**THE NEW MAMIYA 6 RANGEFINDER CAMERA**

The New Mamiya 6 is the product of the latest advances in opto-electronic technology. It is a highly versatile photographic tool - perfect for many applications. With automatic or manual exposure, interchangeable lenses, ergonomic body design, and full flash synchronization at all shutter speeds, the new Mamiya 6 is ideal for professional and fine art photographers, as well as demanding amateur photographers.

**THE EXCITEMENT OF RANGEFINDER PHOTOGRAPHY WITH  
THE NEW MAMIYA 6  
CONTINUOUS VIEWING, EVEN DURING THE MOMENT OF EXPOSURE  
SILENT ELECTRO-MAGNETIC LEAF SHUTTER OPERATION**



LARGE, BRIGHT VIEWFINDER WITH COUPLED, PARALLAX CORRECTED, WIDE BASE RANGEFINDER.  
BUILT-IN BRIGHT LINE FRAMES COUPLED TO EACH LENS.  
COMPLETE EXPOSURE INFORMATION L.E.D. DISPLAY VISIBLE IN VIEWFINDER.

APERTURE PRIORITY AUTOMATIC EXPOSURE CONTROL WITH EXPOSURE  
COMPENSATION OR MANUAL EXPOSURE CONTROL, ALL WITH THE TOUCH OF THE ULTRA-QUIET,  
ULTRA-SOFT ELECTRO-MAGNETIC SHUTTER RELEASE BUTTON.

SELECTION OF THREE NEW HIGH PERFORMANCE MAMIYA  
INTERCHANGEABLE LENSES - AN IDEAL RANGE-50mm f/4 WIDE ANGLE,  
75mm f/3.5 STANDARD, AND 150mm f/4 TELEPHOTO.

COMPACT, LIGHTWEIGHT DESIGN, WITH CONVENIENT, RETRACTABLE LENS MOUNT.

ERGONOMIC BODY DESIGN WITH INTEGRAL NON-SLIP HAND GRIP.

VERSATILE, SQUARE 6 × 6 FORMAT FOR EASE OF HANDLING



# **BODY** WEIGHING A MERE 2½ LBS. WITH THE STANDARD 75mm LENS, THE NEW MAMIYA 6 IS THE PERFECT MEDIUM FORMAT CAMERA FOR HAND-HELD USE



## **STRONG, LIGHTWEIGHT BODY CASTING**

The body casting and retractable lens mount are both made of a new, super-strong, yet light weight die cast aluminium alloy developed at Mamiya Research Labs for the new Mamiya 6.

Designed to function in any situation, the new Mamiya 6 is a rugged, reliable, working tool for the professional.

## **FORM FOLLOWS FUNCTION**

The ergonomic design of the Mamiya 6 incorporates a built-in hand grip with all exposure controls conveniently positioned at the fingertips.

A non-slip rubber covering wraps around the body and handgrip for secure hand-held use.

The whisper-soft shutter action is almost inaudible, triggered by an ultra-soft touch electromagnetic shutter release ideally positioned at an angle on the integral hand grip.

## **SINGLE, SHORT STROKE ADVANCE**

A single turn of the film advance lever winds the 120 or 220 film and cocks fully synchronized leaf shutter built-in to each new Mamiya 6 lens.

## **INSTANT CONVERSION FROM 120 TO 220**

With a quick turn of the pressure plate, the Mamiya 6 automatically converts transport and film counter from 12 exposures 120 film to 24 exposures 220 film use.



## **COMPACT CONVENIENCE WITH RETRACTABLE LENS MOUNT**

With the retractable, die cast aluminium lens mount, any interchangeable Mamiya 6 lens can be recessed into the body by 1.2 inches for carrying or storage; adding to the compact and portable design of the entire Mamiya 6 system.





# 6×6

## THE PERFECT SQUARE FORMAT



35mm format



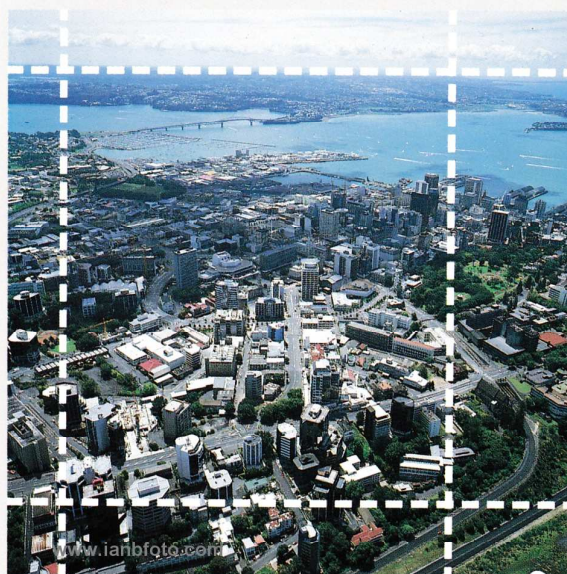
6×6cm format  
Actual image size is 56×56cm

### SQUARE FORMAT COMPOSITION

The square 6×6cm format gives you more control over composition than the conventional vertical or horizontal 35mm format. You can compose square, vertical or horizontal images in the viewfinder - in any proportion to standard 8×10 enlargements - and crop in printing, with excellent results from the large 6×6cm negative.

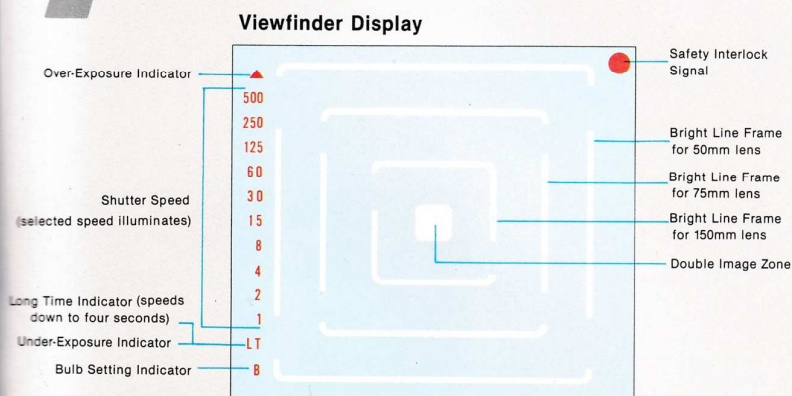
### SQUARE FORMAT BENEFITS VS. 35mm FORMAT

The 6×6cm format is approximately 3.6× larger than the 35mm format. Combined with Mamiya's new high performance lenses, high quality enlargements are easily obtainable with the new Mamiya 6.



# FINDER

## A SPEEDY AND QUICK VIEWFINDER



### QUICK COMPOSITION WITH THE BRIGHT, CLEAR, MAMIYA 6 VIEWFINDER

The double-image, superimposing, coupled rangefinder is ideal for medium format photography. The new Mamiya 6 rangefinder is surprisingly bright, clear and precise due to its wide 60mm base length.

### AUTOMATIC BRIGHT LINE FRAMES AND PARALLAX COMPENSATION

Mounting any of the three new Mamiya 6 coupled rangefinder lenses will automatically key in the appropriate frame lines for either 50mm, 75mm, or 150mm lens. Parallax correction for each focal length lens is also automatic.

### FULL INFORMATION VIEWFINDER

All exposure information is visible in the viewfinder at a glance, including L.E.D.'s for shutter speed selected manually or automatically, over/under exposure, and safety interlock signal, as well as the rangefinder double image and focal length bright line frame for the lens in use.



# ELECTRONICS

## APERTURE PRIORITY AUTOMATIC EXPOSURE CONTROL AND ELECTRONIC LEAF SHUTTERS



### ELECTRONICS

In the AE mode, set the aperture on the Mamiya 6 lens and with a touch of the shutter release button, the shutter speed is automatically set for proper exposure. The metering method is changed depend on the lens used. In case of using 50mm and 75mm lenses, metering method is center-weighted metering, and in case of using 150mm lens, metering method is changed to averaged metering.

The leaf shutter is stepless in the AE mode, giving precise exposure at any speed between 4 seconds and  $\frac{1}{500}$  second - "Stepless shutterspeeds provide accurate exposures at any intermediate speed".

### AE LOCK AND EXPOSURE COMPENSATION

In extreme brightness situations, such as with a backlighted subject, the AE lock and exposure compensator (+ 2 to - 2EV in  $\frac{1}{3}$  EV increments) are necessary tools for correct exposure in the automatic mode.

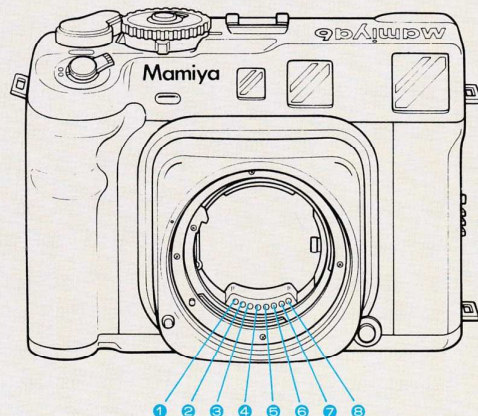
### MANUAL EXPOSURE CONTROL

Select a shutter speed manually, and an L.E.D. will indicate the chosen speed while a blinking L.E.D. will indicate the shutter speed for correct exposure. The L.E.D. display will remain on for 10 seconds once the shutter release button is lightly touched.

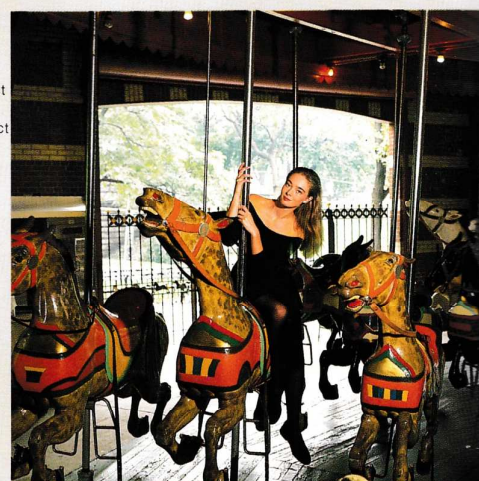
### FLASH SYNCHRONIZATION AT ALL SPEEDS

For total exposure control and creativity, the Mamiya 6 allows you to use any shutter speed with any of its three lenses for fully synchronized ambient light fill-in flash. This allows you to set your aperture for flash exposure and the Mamiya 6's AE exposure will automatically set the shutter speed for correct exposure. Or use AE lock, exposure compensation, or manual setting features for creative mixing of fill-in flash and ambient light exposure.

### 8 ELECTRONIC CONTACTS INTERFACE BODY AND LENS



- 1 Aperture Information Power Contact
- 2 Aperture Information Control Contact
- 3 Shutter Speed Control Contact
- 4 Ground Contact
- 5 X Circuit Ground Contact
- 6 Shutter Open Contact
- 7 Shutter Closed Contact
- 8 X Circuit Positive Contact





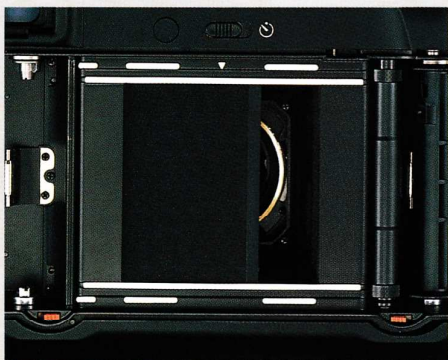
# SAFETY

## SAFETY INTERLOCKS FOR ERROR FREE CAMERA OPERATION



### BELLOWS BAFFLE PREVENTS INTERNAL REFLECTIONS

The new Mamiya 6 features a light baffling internal bellows, housed within the die cast aluminium alloy retractable lens mount.



### INTERNAL "DARK SLIDE" CURTAIN PERMITS LENS CHANGE WITH LOADED CAMERA

When changing the leaf shutter lenses on the Mamiya 6, the film is protected by an internal curtain which acts like a dark slide. This curtain is actuated from the bottom of the camera. When the curtain is in place the shutter release is locked and the red Safety Interlock Signal LED shows in the viewfinder. When the curtain is open, the lens cannot be removed.

### RETRACTABLE LENS MOUNT INTERLOCK

When the lens mount is retracted for compact portability, the shutter cannot be released. The Safety Interlock Signal L.E.D. will illuminate in the viewfinder when the lens mount is retracted.

### BATTERY POWER INDICATOR

When voltage drops in the batteries below functional levels, a blinking shutter speed L.E.D. will indicate the need for battery replacement.

### THE SHUTTER WILL NOT OPERATE WHEN:

- Film is not loaded.
  - Film winding lever is not advanced.
  - Lens mount is retracted.
  - Internal dark slide is covering the film.
- In these cases, the Safety Interlock Signal will illuminate in the viewfinder.

## SAFETY LOCKING MECHANISMS



### SHUTTER LOCK

Shutter will not operate when set on red dot.



### AE/AE LOCK

Safety lock in center of shutter speed dial must be depressed to move off the automatic exposure mode.



### BACK COVER LOCK

Double lock with button and slide latch prevents inadvertent opening of camera back.



# LENS

## THREE NEW MAMIYA INTERCHANGEABLE LENSES FOR A WIDE RANGE OF APPLICATIONS



The 50mm lens is symmetrically designed, with minimum distortion and high contrast and illumination. Ideal for landscapes, interior, and reportage photography.

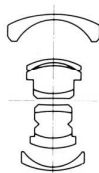
75mm

The 75mm lens provides high contrast and sharpness with excellent performance at all distances. The 75mm focal length is useful for a wide variety of subjects.



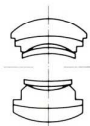
The 150mm lens uses Ultra-low Dispersion glass resulting in maximum chromatic correction and high colour fidelity, especially important in long focal length lenses. The six element design produces excellent images at minimum focus distances as well as at infinity.

Lens Construction
Angle of View
Minimum Focus Distance
35mm format equivalent
Filter size
Lenshood
Dimensions
Weight



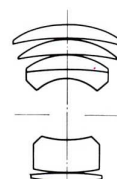
50mm

WIDE ANGLE LENS



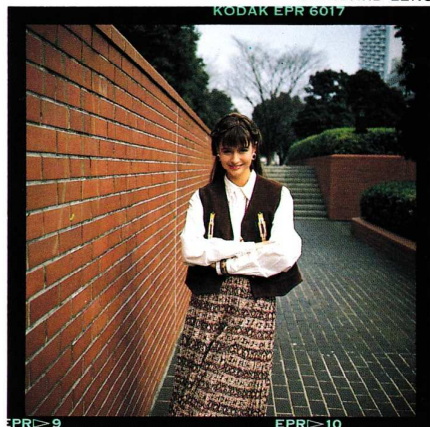
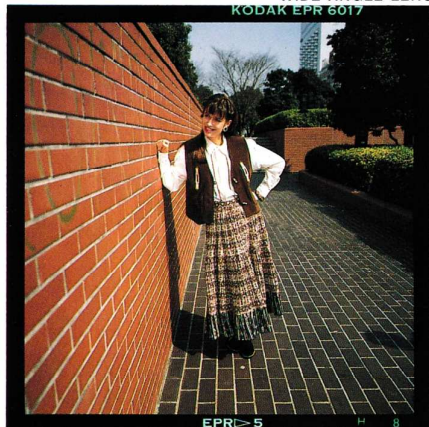
75mm

STANDARD LENS



150mm

TELEPHOTO LENS





50mm f/4	75mm f/3.5	150mm f/4.5
8 Elements 5 Groups	6 Elements 4 Groups	6 Elements 5 Groups
75°	55°	30°
3.3' (1m)	3.3' (1m)	5.9' (1.8m)
28mm	41mm	82mm
58mm	58mm	67mm
Bayonet	Bayonet	Screw-in
2.14" × 2.25" (55 × 64mm)	1.5" × 2.25" (43 × 64mm)	3" × 2.47" (86 × 70mm)
11.8 oz (335g)	8.8 oz (250g)	16.9 oz (480g)

50mm



150mm





# SPEC.

## SOPHISTICATED FUNCTIONS WILL CHALLENGE YOUR LATENT CREATIVITY



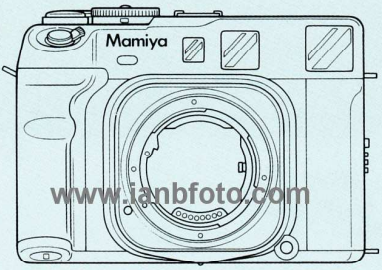




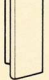



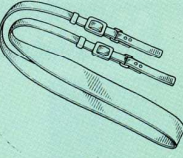
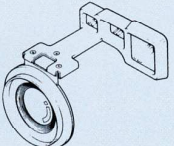


## MAMIYA 6 SPECIFICATIONS

CAMERA TYPE	6 × 6cm format, interchangeable lens, rangefinder camera
FILM TYPE	120 (12 exposures) or 220 (24 exposures) roll film
ACTUAL NEGATIVE SIZE	56mm × 56mm
LENS TYPE	Wide Angle 50mm f/4 Standard 75mm f/3.5 Telephoto 150mm f/4.5
FILM WINDING	A single 185° stroke
SHUTTER	#00 electronic leaf shutter; B, 4 to 1/500 second, electromagnetic release; X contact, synchronizing at all speeds with hot shoe and cord socket; electronic self timer
EXPOSURE CONTROL	Aperture priority AE; Silicon Photo Diode receptor in viewfinder; metering range: EV 3.5 to EV 18 (75mm lens f/3.5, ISO 100); exposure compensation: +2 to -2EV (in 1/3 EV increments)
FILM SPEED RANGE	ISO 25 ~ 1600
RANGEFINDER	Lens declination, double image superimposing system; base length: 60mm (effective base length 34.8mm)

VIEWFINDER	Coupled with rangefinder; automatic bright line frame selection (50mm, 75mm, 150mm); parallax compensation; magnification: 0.58X; 83% of the field of view visible at infinity; built-in shutter speed and exposure display, safety interlock warning L.E.D.
INTERNAL "DARK SLIDE" CURTAIN	For interchangeable lens function
SAFETY MECHANISMS	1. Double exposure prevention 2. Exposure prevention when internal dark slide engaged 3. Exposure prevention when lens mount is retracted
POWER SUPPLY	Two 1.5V batteries (MS 76, SR44 or LR44)
DIMENSIONS	Camera Body: 6.1" (155mm) length × 4.3" (109mm) height × 2.7" (69mm) depth - 2.1" (54mm) depth when lens mount retracted Body with 75mm lens: 6.1" (155mm) length × 4.3" (109mm) height × 4.2" (106mm) depth - 2.9" (75mm) depth when lens mount retracted
WEIGHT	Camera Body: 31.4 oz (890 g) Body with 75mm lens: 40.2 oz (1,140 g)

## SYSTEM

Body		Interchangeable Lenses			
<p>New Mamiya 6 Body</p> 		   <p>50mm f/4      75mm f/3.5      150mm f/4.5</p>			
Lens hoods	Eye-piece Diopters	Case	Tripod Adapter	Strap	Other Accessory
 For 50mm f/4   For 75mm f/3.5   For 150mm f/4.5	<p>Eye Correction Lens N</p> <p><input type="checkbox"/> +3 Diopter</p> <p><input type="checkbox"/> +2</p> <p><input type="checkbox"/> +1</p> <p><input type="checkbox"/> -1</p> <p><input type="checkbox"/> -2</p> <p><input type="checkbox"/> -3</p>	<p>Soft Lens Case Type A</p> 	<p>Tripod Adapter N</p> 	<p>Neck Strap</p> 	<p>Auto-Up Close-Up Attachment (Under development)</p> 

All Specifications, functions, and appearance subject to change without notice.



# New Mamiya 6



50mm

## ***THE 6 to go***



1ED 1112